

CRANE MODERNIZATION



16/27 t x 33/21 m – capacity GANZ-type
double-jib level-luffing portal crane

GANZ

for U.S. Steel Serbia
2004

GANZ DANUBIUS
TRADING Co. Ltd.

Modernization of a GANZ-type double-jib level-luffing portal crane

A world map with a light blue background and yellow landmasses. The map is centered on the Atlantic Ocean, showing the Americas on the left and Europe, Africa, and Asia on the right. The text is overlaid on the map.

Contents

Dismounting the crane and container transportation of parts for overhauling

Overhauling of steel structure and machinery

Supply new and modern electrical system

Installation of overhauled steel structure, machinery and new electrical system

Test and trials

Modernization of a GANZ-type double-jib level-luffing portal crane

Dismounting the crane and container transportation of parts for overhauling



Modernization of a GANZ-type double-jib level-luffing portal crane

Dismounting the crane and container transportation of parts for overhauling



Modernization of a GANZ-type double-jib level-luffing portal crane

Overhauling of steel structure and machinery



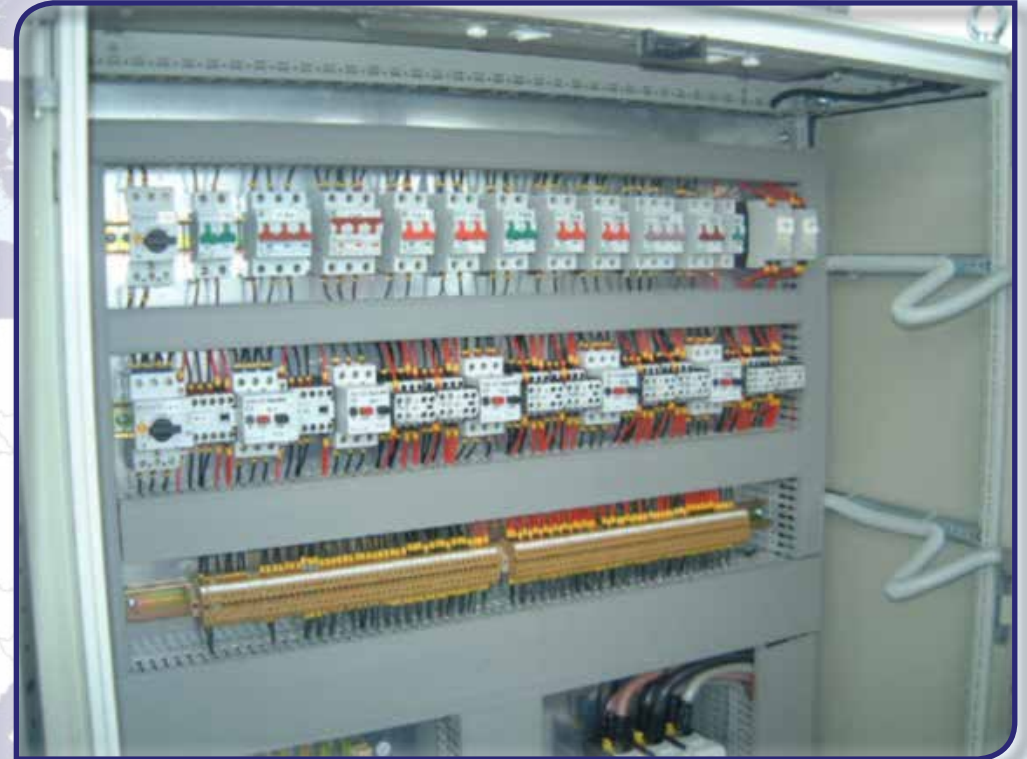
Modernization of a GANZ-type double-jib level-luffing portal crane

Overhauling of steel structure and machinery



Modernization of a GANZ-type double-jib level-luffing portal crane

Supply new and modern electrical system



Modernization of a GANZ-type double-jib level-luffing portal crane

Supply new and modern electrical system



Modernization of a GANZ-type double-jib level-luffing portal crane

Installation of overhauled steel structure, machinery and new electrical system



Modernization of a GANZ-type double-jib level-luffing portal crane

Installation of overhauled steel structure, machinery and new electrical system



GANZ DANUBIUS
TRADING Co. Ltd.

Modernization of a GANZ-type double-jib level-luffing portal crane

Installation of overhauled steel structure, machinery and new electrical system



Modernization of a GANZ-type double-jib level-luffing portal crane

Installation of overhauled steel structure, machinery and new electrical system



GANZ DANUBIUS
TRADING Co. Ltd.

Modernization of a GANZ-type double-jib level-luffing portal crane

Installation of overhauled steel structure, machinery and new electrical system



Modernization of a GANZ-type double-jib level-luffing portal crane

Installation of overhauled steel structure, machinery and new electrical system



Modernization of a GANZ-type double-jib level-luffing portal crane

Installation of overhauled steel structure, machinery and new electrical system



Modernization of a GANZ-type double-jib level-luffing portal crane

Test and trials



Modernization of a GANZ-type double-jib level-luffing portal crane

Test and trials



Modernization of a GANZ-type double-jib level-luffing portal crane

Test and trials



**16/27 t x 33/21 m – capacity GANZ-type
double-jib level-luffing portal crane**



GANZ

for U.S. Steel Serbia 2004

Thank you for you attention!

www.ganztrading.hu

**GANZ DANUBIUS
TRADING Co. Ltd.**